

Over the weekend the seed you planted has grown into a full grown plant. Plants have many parts above and below ground.

Antsy Nancy and Grant decide to split up to explore the different parts of the plant. On her way up Nancy encounters the stem, leaves, and flowers. Down below ground Grant travels through a vast root network.

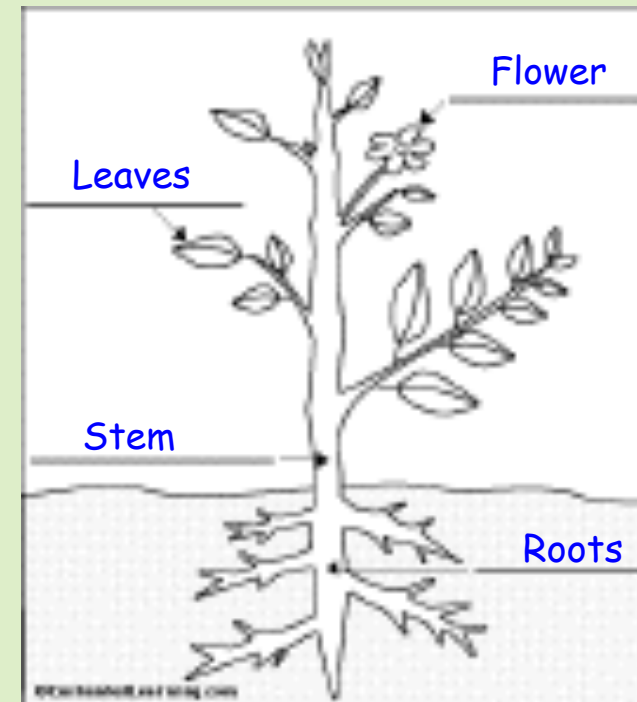
"How's it going down there Grant?" shouts Nancy.

"These roots are like a labyrinth, I'm totally **amazed**." replies Grant.

Use pattern blocks to create a plant that includes roots, stem, leaves, and flowers.



Leaves



Flower



Roots



Stems