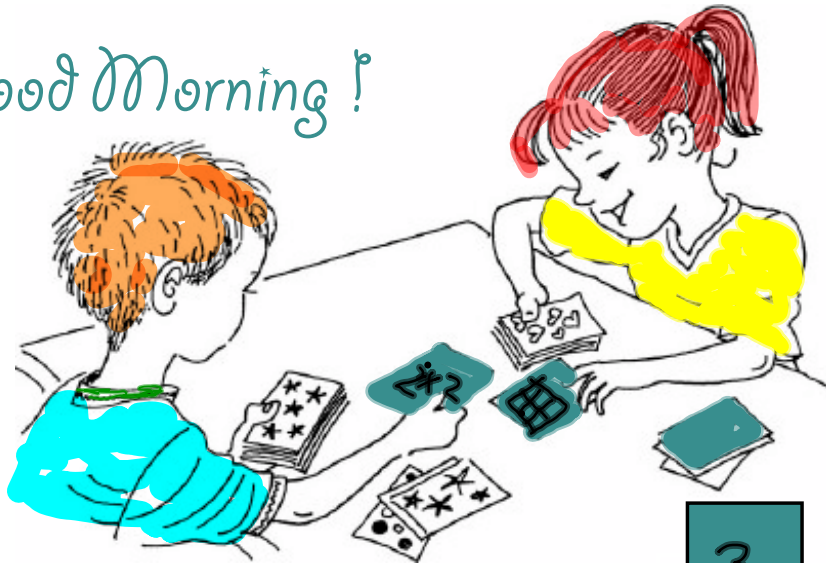


Good Morning!



Are you ready to play a card game?

1. Find a partner.
2. Deal out the cards equally.
3. There are two possible games you can play:
Biggest Area or Biggest Perimeter
Decide which measurement you will be using for your game.
4. Each of you turns over the top card in your deck.
5. The person who has the biggest measurement wins both cards.
If you have a tie, those two cards will go to the player who wins the next round.
6. Continue until you play through your original hand and then count the cards you won and see who has the most cards.

